

REO



UL-certified products by REO

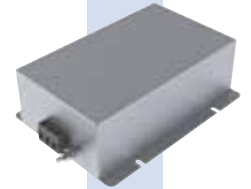


Pure|Power|Perfection



EMC filter

Type	Certified Ratings (A)
CNW 101	3, 6, 10, 16, 20
CNW 102	3, 6, 10, 16, 20
CNW 103	3, 6, 10, 16, 25, 36, 50, 50/2D, 80, 120, 150
CNW 103.3	16
CNW 104	6
CNW 114	8, 16, 25, 36, 50, 64, 80, 110, 180, 280, 450, 600
CNW 116	12
CNW 203	16, 30
CNW 204	7, 16, 30, 42
CNW 414	30



Reactors

Type	Certified Ratings (A)
CNW M 901	2, 4, 6, 8, 10, 16, 20, 25, 30, 35, 40, 45, 50
CNW M 903	3, 6, 8, 10, 12, 16, 18, 25, 36
CNW M 905	3, 6, 8, 10, 12, 16, 25, 36
CNW M 906	3, 6, 8, 10, 12, 16, 25, 36
CNW M 854	2, 4, 6, 8, 10, 12, 16, 24, 30, 37, 48
CNW 901	2, 4, 6, 8, 10, 16, 20, 25, 30, 35, 40, 45
CNW 903	3, 6, 8, 10, 12, 16, 18, 25, 36
CNW 905	3, 6, 8, 10, 12, 16, 25, 36
CNW 906	3, 6, 8, 10, 12, 16, 25, 36
CNW 854	2, 4, 6, 8, 10, 12, 16, 24, 30, 37, 48
CHI 136 J	2, 4, 6, 8, 10, 16, 24, 32, 37, 48, 60, 75, 90
CHI 831 E 16	16/1,5 Inductance
CHI 131 E 100	100/0,5 Inductance
CHI 131 E 150	150/0,5 Inductance



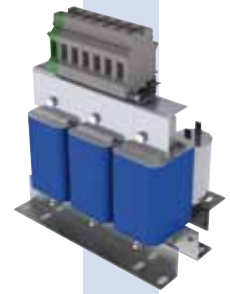
Braking resistors

Type	Certified Ratings (W)
BW 151	50, 100, 150, 200, 250, 300
BW 153	100, 200, 300, 400
BW 156	400, 600, 800, 1000, 1200, 1500, 2000, 2000, 2400, 3000, 4500, 6000, 7500
BW 605	3, 4, 5.5, 7.5



Sinusoidal filter

Type	Certified Ratings (A)
CNW M 933	2, 4, 6, 8, 10, 12, 16, 20, 24, 30, 37, 48
CNW 933	2, 4, 6, 8, 10, 12, 16, 20, 24, 30, 37, 48
CNW 9339	4, 6, 8, 10, 16, 24, 32, 48, 60, 75, 90



Isolation transformers

Type	Certified Ratings	
	Input (V)	Output (V)
REOMED 300	115/230	230
REOMED 600	115/230	230
REOMED 1000	115/230	230
REOMED 300	230	230
REOMED 600	230	230
REOMED 1000	230	230
REOMED 300	115	230
REOMED 600	115	230
REOMED 1000	115	230
REOMED 300	115	115
REOMED 600	115	115
REOMED 1000	115	115



Frequency converter

Type	Certified Ratings (A)
REOVIB MFS 268 (open)	3, 6, 8, 16
REOVIB MFS 268 (closed)	6, 8, 12, 16



Accessories

Type	
REOVIB MFS 268	Adapter cables used for 24V, dc signal input/output, Model(s) Signal I/O 4pol.-M12, Signal I/O 5pol.-M12
REOVIB MFS 268-IP54-PV	6, 8, 12, 16 A: Adapter cables used for output connectors, Model(s) Output cable



■ REO-USA, Inc.
8450 E. 47th St · USA-Indianapolis, IN 46226

Tel.: +1 (317) 899 1395
Fax: +1 (317) 899 1396

E-Mail: info@reo-usa.com
Internet: www.reo-usa.com

■ REO Headquarter - Germany
REO INDUCTIVE COMPONENTS AG
REO ELEKTRONIK AG
Brühler Straße 100 · D-42657 Solingen
Tel.: +49 (0)212 8804 0 · Fax: +49 (0)212 8804 188

E-Mail: info@reo.de
Internet: www.reo.de

■ China
REO Shanghai Inductive Components Co., Ltd
No. 536 ShangFeng Road · Pudong, 201201 Shanghai · China
Tel.: +86 (0)21 5858 0686 · Fax: +86 (0)21 5858 0289
E-Mail: info@reo.cn · Internet: www.reo.cn

■ France
REO VARIAC S.A.R.L.
ZAC Du Clos aux Pois 1 · 6/8 rue de la Closerie-LISSES · F-91048 Evry Cédex
Tel.: +33 (0)1 6911 1898 · Fax: +33 (0)1 6911 0918
E-Mail: reovariac@reo.fr · Internet: www.reo.fr

■ Great Britain
REO (UK) Ltd.
Units 2-4 Callow Hill Road · Craven Arms · Shropshire SY7 8NT · UK
Tel.: +44 (0)1588 673 411 · Fax: +44 (0)1588 672 718
E-Mail: main@reo.co.uk · Internet: www.reo.co.uk

■ India
REO GPD INDUCTIVE COMPONENTS PVT. LTD
2/202 Luna Road · Village Luna · Taluka Padra
Vadodara - 391440 · India
Tel.: +91 (2662) 221723, +91 (265) 2396148 · Fax: +91 (265) 2396971
E-Mail: info@reogpd.com · Internet: www.reo-ag.in

■ Italy
REO ITALIA S.r.l.
Via Treponti, 29 · I-25086 Rezzato (BS)
Tel.: +39 030 279 3883 · Fax: +39 030 279 0600
E-Mail: info@reoitalia.it · Internet: www.reoitalia.it

■ Poland
REO CROMA Sp.zo.o
ul. Pozaryskiego 28, bud 20 · PL-04-703 Warszawa
Tel.: +48 (0)22 812 3066 · Fax: +48 (0)22 815 6906
E-Mail: croma@croma.com.pl · Internet: www.croma.com.pl

■ Spain
REO ESPAÑA 2002 S.A.
C/Manuel Ventura i Campeny 21B · local 9 · E-08339 Vilassar de Dalt (Barcelona)
Tel.: +34 937 509 994 · Fax: +34 937 509 995
E-Mail: info@reospain.com · Internet: www.reospain.com

■ Switzerland
REO ELEKTRONIK AG
Im Halbiacker 5a · CH-8352 Elsau
Tel.: +41 (0)52 363 2820 · Fax: +41 (0)52 363 1241
E-Mail: info@reo.ch · Internet: www.reo.ch

■ Turkey
REOTURKEY ELEKTRONIK San. ve Tic. Ltd. Şti.
Halil Rifatpasa Mah. · Darülcüze CD Perpa Tic Merkezi
B Blok Kat 8 No:1095 · TR-34384 Sisli – Istanbul
Tel.: +90 (0)212 2215 118 · Fax: +90 (0)212 2215 119
E-Mail: info@reo-turkey.com · Internet: www.reo-turkey.com