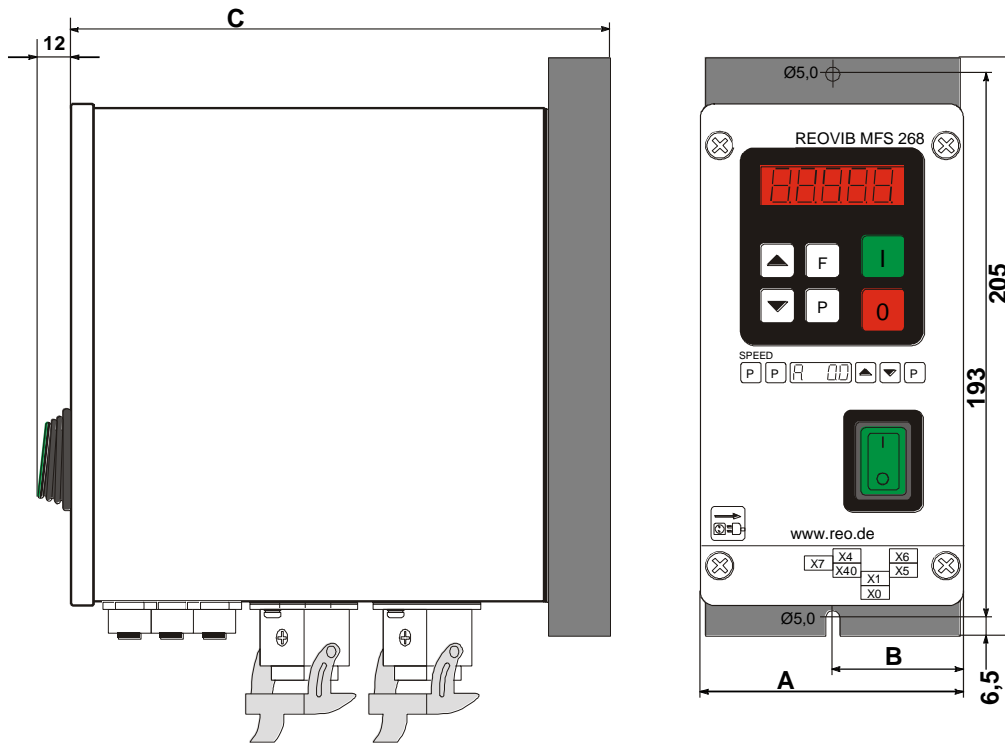
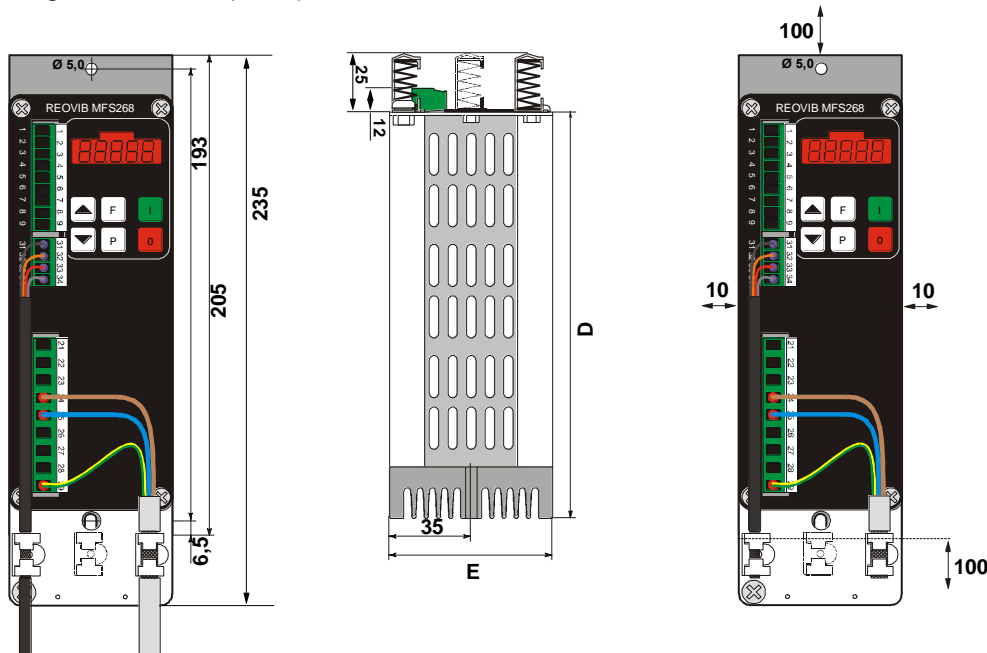


13.0 Dimensions for 3 A, 6 A, 8 A Units

Enclosed construction, (IP 54)



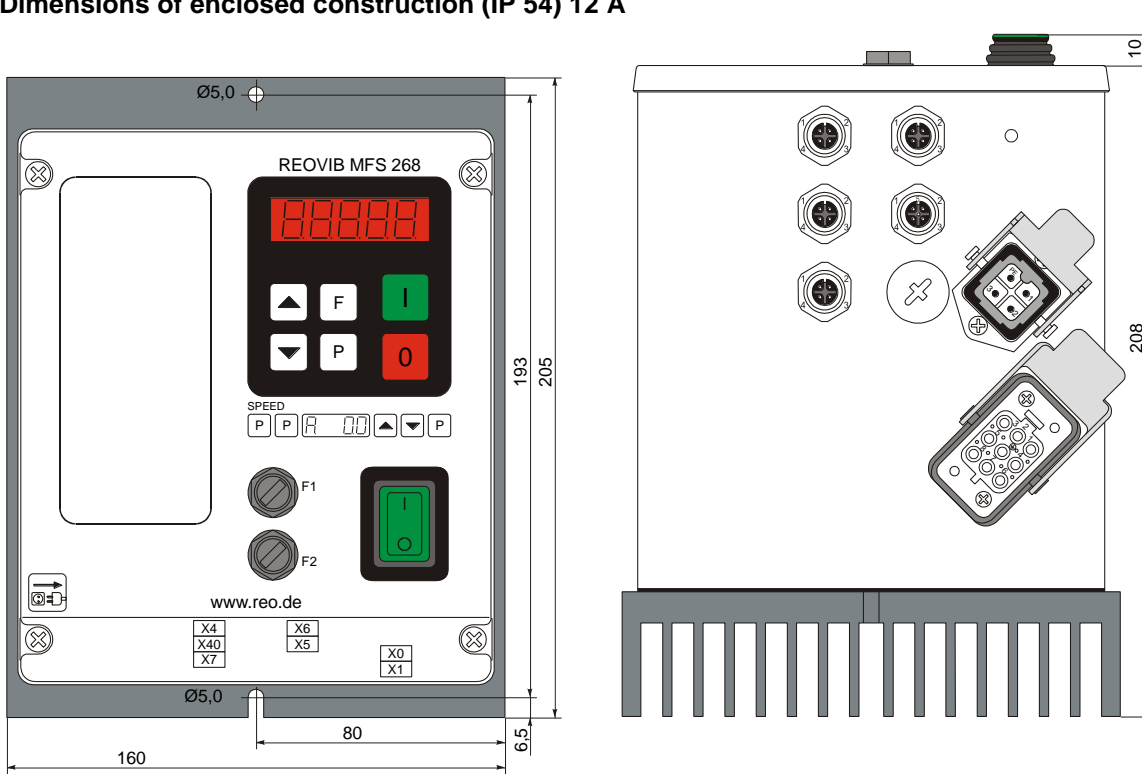
Panel mounting construction, (IP 20)



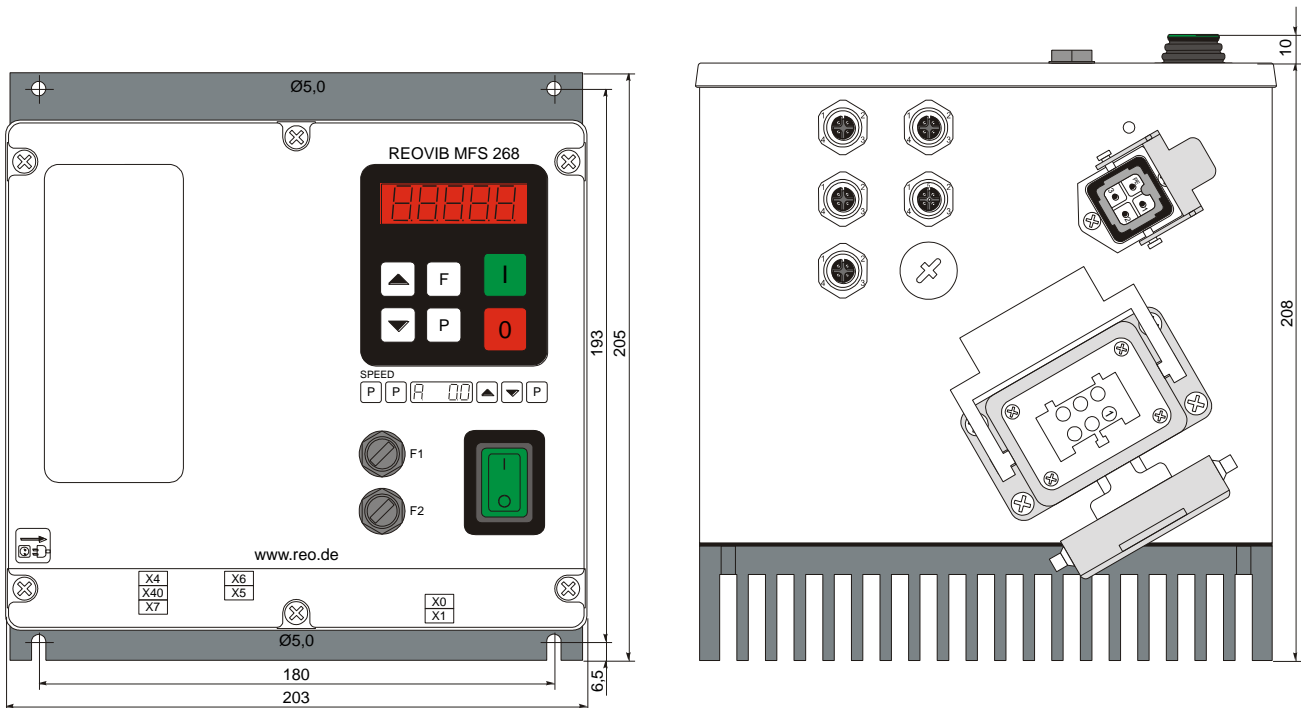
	3A	6A	8A
A	90	90	100
B	45	45	50
C	173	191	209
D	155	175	195
E	70	70	104

All dimensions in [mm]

Dimensions of enclosed construction (IP 54) 12 A



Dimensions of enclosed construction (IP 54) 16 A



Dimensions of Panel mounting construction (IP 20) 16 A

