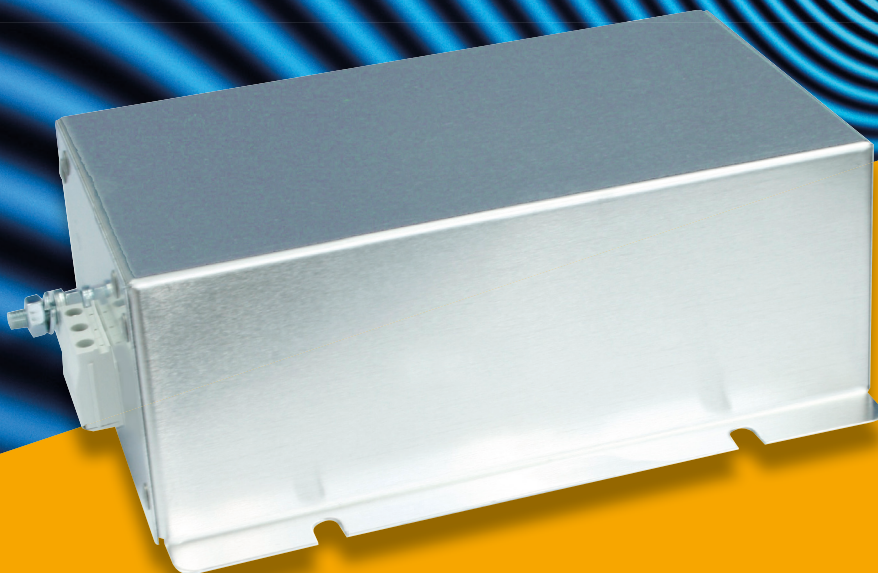


# REO EMC Filter N CNW 105

Developed for use in environments with Powerline Communication (PLC) interference



**N CNW 105**

Visit our  
website



## WELCOME TO A MORE INTERFERENCE-FREE FUTURE WITH THE REO NET FILTER N CNW 105

Our innovative EMV Filter series, N CNW 105, sets standards in performance, reliability, and sustainability. This new product line is designed not just to meet but exceed expectations.

Are your LED lights flickering? Is unwanted noise disrupting your audio system? The REO Filter N CNW 105 might be the solution to your problems!

Our REO filters have a proven track record: effectively decoupling disturbances and minimizing radiation. However, to ensure these filters are optimally and effectively installed, a joint assessment with your electrician is indispensable.

### TECHNICAL SPECIFICATIONS

- Three-phase mains filters (4 lines, single stage) (3A – 150A)
- Compact construction
- Low temperature rise
- Touch-proof terminals
- Good damping performance at a low leakage current
- Conforming to: IEC/EN 60939 / IEC 950 / UL 1283
- Test voltage: L-L 2100 V, DC 1s, L-PE 2700 V, DC 1s
- Overload: 1,5 x I 1 min/h
- Climatic category: DIN IEC 68 Teil 1 25/085/21

Our EMV Filter series N CNW 105 is the answer to your requirements for reliable, efficient, and future-proof interference suppression. Experience the performance, safety, and versatility of this new product range.



### KNOWLEDGEABLE

High-frequency signals can lead to unwanted interference in various electrical appliances, such as LED lighting.

The use of an REO EMC filter suppresses this interference and reduces the emission of high-frequency signals through the power lines

### VERSATILE APPLICATIONS

Our EMV filters are widely used in power supply units for data systems, telecommunications, medical devices, and industrial applications.



Centralized Control Technology



RFID -Applications



Slow powerline communication



Smart Meters



Powerline Communication interference



Interference on LED lighting due to PLC signals



Interference noise on audio and video devices

## OUR SERVICE: YOUR SAFETY IS OUR PRIORITY

### PERFORMANCE AND EFFICIENCY

Our N CNW 105 series not only offers impressively faster delivery times but also comprehensive resource conservation and enhanced efficiency. This filter series sets standards in interference suppression according to EN 55011 (Class A) and EN 61800-3 (Category C2).



### N CNW 105/25 – YOUR SOLUTION FROM CHF 440.85 INCLUDING SHIPPING FROM SWISS WAREHOUSE

The N CNW 105/25 filter is available starting from a quantity of 1 for CHF 440.85, shipping directly from our warehouse in Switzerland. Quantity discounts are available upon request.



Experience the effectiveness of our REO network filters for reliable operation of your smart home systems.

### TEST THE FILTER BEFORE MAKING YOUR DECISION

For a hassle-free solution, we offer the option to test the filter for four weeks for a nominal fee of CHF 50. If you decide to purchase afterward, this amount will be deducted from your invoice.



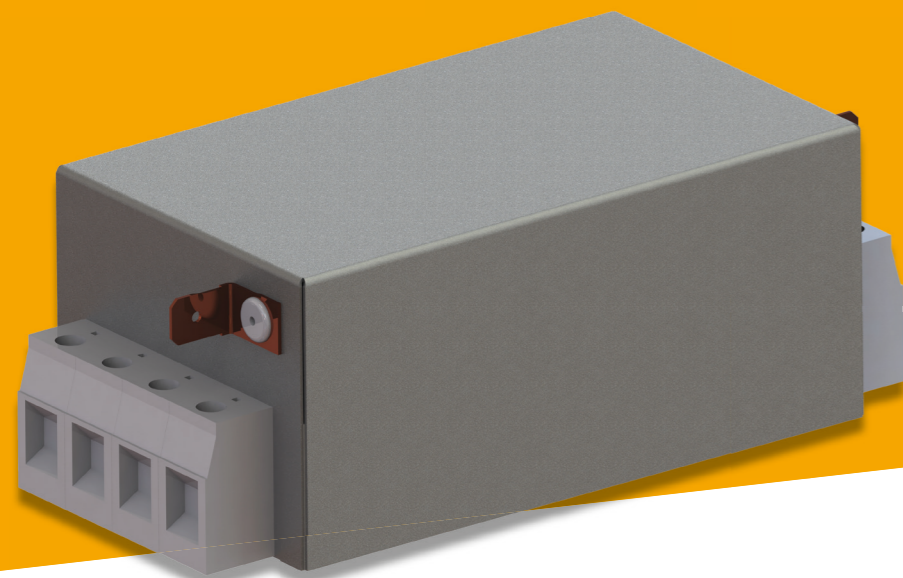
### DIVERSITY IN SOLUTIONS: REO PROVIDES ALTERNATIVES FOR YOUR REQUIREMENTS

At REO, we offer more than just one solution. We understand that diversity and flexibility are key to meeting your requirements. That's why, if needed, we also provide alternative filter types, allowing you to find the best possible solution for your specific needs.



## TECHNICAL DATA AND BENEFITS: THE KEY TO OPTIMIZED PERFORMANCE

## YOUR BENEFITS



Compact construction



Good damping performance at a low leakage current



Low temperature rise



Touch-proof terminals



Easy installation

## TECHNICAL DATA

Type	Rated voltage [V]	Rated current [A]	Leakage current [mA]	Cx [μF]	Cy [nF]	L [mH]	R [MΩ]	Frequenz [Hz]
N CNW 105/3	3 x 500	4x3	< 1	0,5	30 nF	4,0	1,12	50/60
N CNW 105/6		4x6		0,5		2,4		
N CNW 105/10		4x10		0,5		1,0		
N CNW 105/16		4x16		1	43 nF	1,6		
N CNW 105/25		4x25		1	44 nF	1,4		
N CNW 105/36		4x36		2,2	44 nF	1,2		
N CNW 105/50		4x50	2,2	0,75				
N CNW 105/80		4x80	3,3	0,5				
N CNW 105/120		4x120	< 3,5	3,3	111 nF	0,36		
N CNW 105/150		4x150	3,3	3,3				

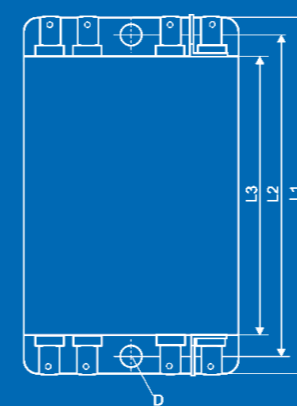
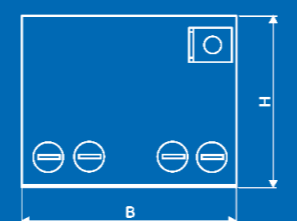
## DIMENSIONS IN MM

Type	Casing	Connection	PE-Connection	Dimensions [mm]							
				B1 [mm]	B2 [mm]	B3 [mm]	D [mm]	H [mm]	L1 [mm]	L2 [mm]	L3 [mm]
N CNW 105/3	A	Flat plug 6,3 mm	AMP flat plug	53	-	-	5,0	40	110	100	90
N CNW 105/6	A			53	-	-	5,0	40	110	100	90
N CNW 105/10	A			53	-	-	5,0	40	110	100	90
N CNW 105/16	B	Clamps 4 mm <sup>2</sup>	Earthing bolt (M6)	98	80	70	5,0	70	177	150	90
N CNW 105/25	B	Clamps 6 mm <sup>2</sup>		98	80	70	5,0	70	179	150	90
N CNW 105/36	B	Clamps 10 mm <sup>2</sup>		148	135	120	7,0	70	269	240	160
N CNW 105/50	B	Clamps 25 mm <sup>2</sup>		148	135	120	7,0	70	278	240	160
N CNW 105/80	B	Clamps 50 mm <sup>2</sup>	Earthing bolt (M10)	168	155	140	7,0	90	303	240	160
N CNW 105/120	B		Earthing bolt (M12)	168	155	140	7,0	90	331	240	160
N CNW 105/150	B		Earthing bolt (M12)	168	155	140	7,0	90	331	240	160

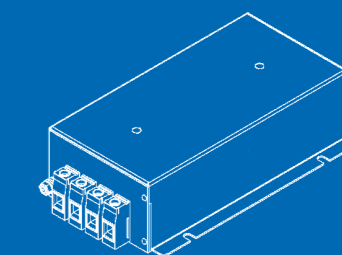
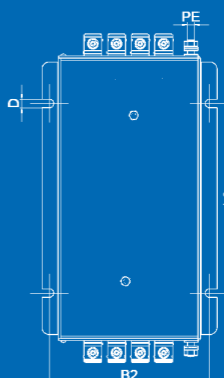
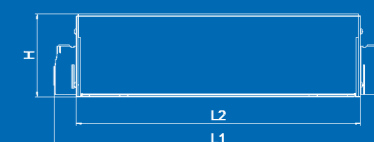
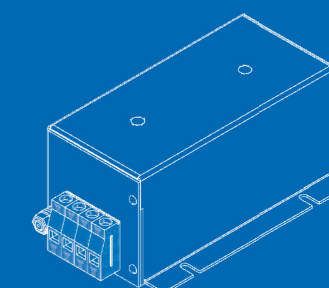
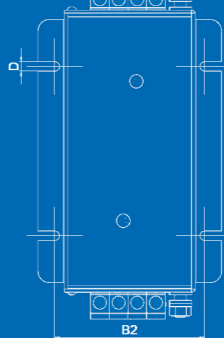
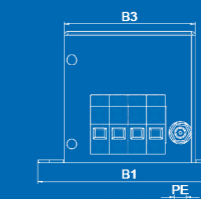


Power supply units for data systems engineering, telecommunications, medical equipment and industrial applications

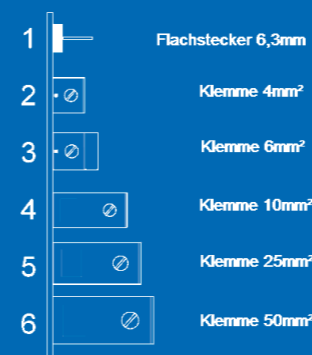
## CASING A



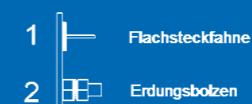
## CASING B



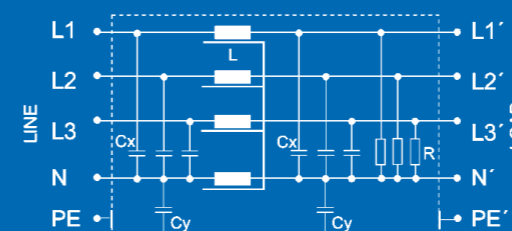
## CONNECTIONS



## PE-CONNECTIONS



## CIRCUIT EXAMPLE

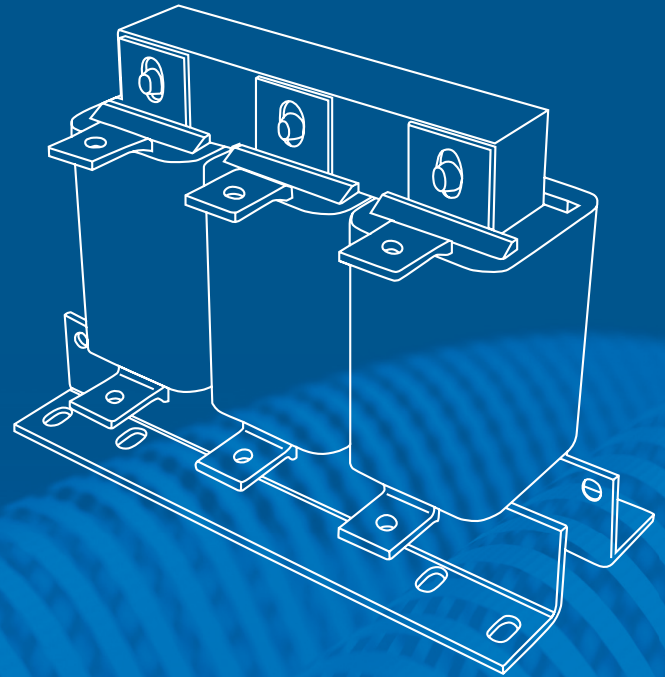


## DISCOVER OUR LINE OF SINUSOIDAL FILTERS AND LINE REACTORS

In addition to our offering, we'd like to highlight that we also have chokes and sinusoidal filters in our product range.

Line reactors contribute to alleviating the supply network by compensating for harmonic reactive power. Our REO du/dt chokes and filters are designed to dampen voltage surges.

Sinusoidal filters ensure a stable, sinusoidal output voltage, ensuring the smooth and long-lasting operation of your motors.



For more information,  
scan the code

### REO AG

Brühler Strasse 100  
D-42657 Solingen  
Tel.: 0049-(0)2 12-88 04-0  
Fax: 0049-(0)2 12-88 04-188  
E-Mail: [info@reo.de](mailto:info@reo.de)  
Internet: [www.reo.de](http://www.reo.de)

Or simply scan the QR-Code

